



**LATUS
CHAIR**

DESCRIPTION**MATERIALS**

wooden seat

<http://artisan.ba/en/materials#wood>

upholstery leather seat

<http://artisan.ba/en/materials#leather>

upholstery fabric seat

<http://artisan.ba/en/materials#lounge-fabric>

LATUS CHAIR

COLLECTION: Latus

DESIGNER: Salih Teskeredžić

CODE:

CCLATXXYY (WOODEN SEAT)

CCLA2XXYY (LEATHER SEAT)

CCLA3XXYY (FABRIC SEAT)

Dimensions: W47 D50 H79 cm

Seat size: 45x44 cm

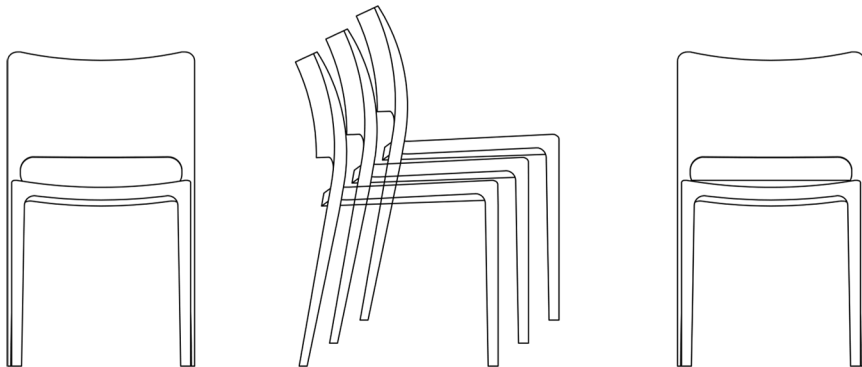
Front legs thickness: bottom \varnothing 3 cm – top \varnothing 3,5 cmBack legs: bottom 2x3,5 – top \varnothing 3,5

Seat height: 48 cm

Dismantling option: No

Packaging: stretch wrap + five-layer cardboard box

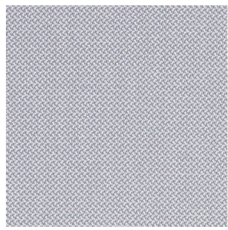
Packaging: 3 piece/packaging



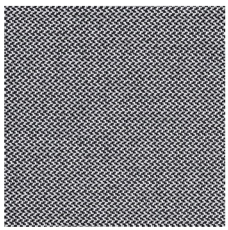


Materials & Finishes

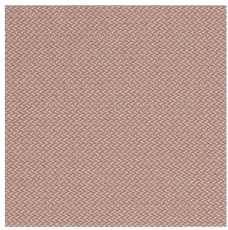
Revive 1



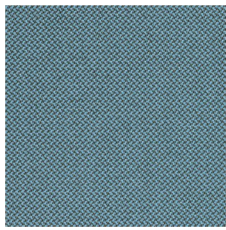
0144



0154



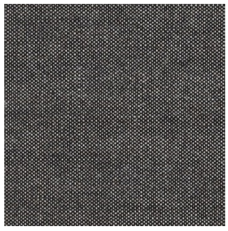
0434



0834



0123



0152



0612



0113

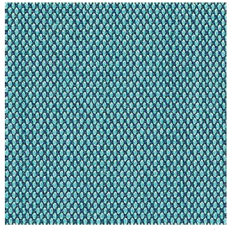
Steelcut Trio 3



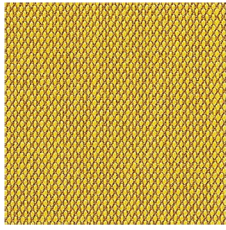
0153



0383

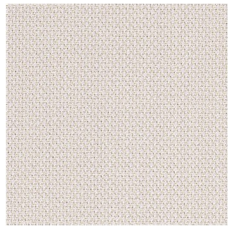


0983



0453

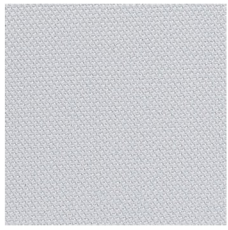
Steelcut 2



0226



0605



0120

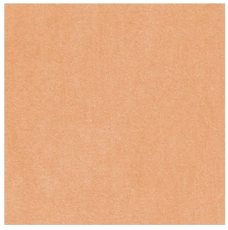


0780

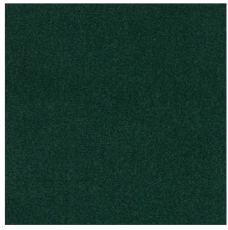
Harald 3



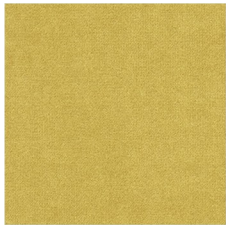
0212



0533



0952



0443

kvadrat Upholstery



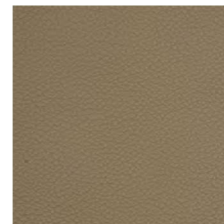
Leather Upholstery



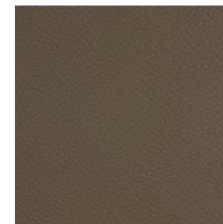
Gruppo Mastrotto Zenith



9001



9007



9034



9014

Stolz Select



310



318

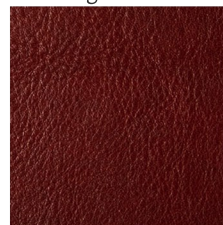


231

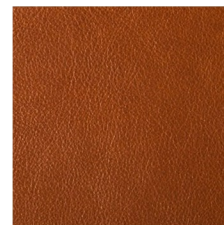


301

Stolz Vegetal



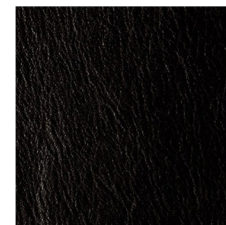
93



91



96



98

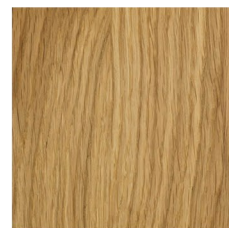
European Oak



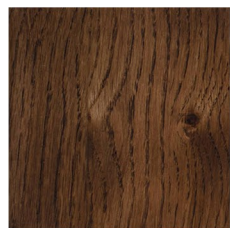
Loba White Oil



White Pigmented Oil



Natural Oil

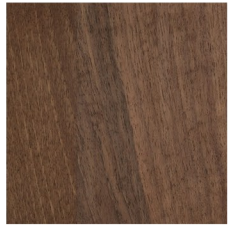


Wenge Oil

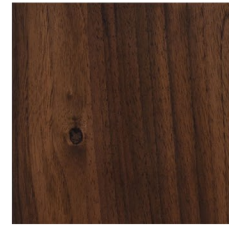
European Walnut



White Pigmented Oil

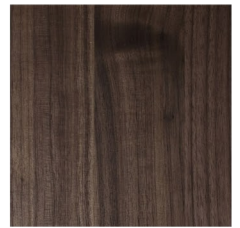


Natural Oil



With Knots - Natural Oil

American Walnut



Natural Oil

Elm



Natural Oil



White Pigmented Oil



Jahorina Pigment

Cherry



Natural Oil

Maple



White Pigmented Oil

Timber Species



CONTACT

For our full range of materials and finishes, please visit our showroom or contact us on 1800 181 558.

WGU Design
5/34 Christensen St,
Cheltenham VIC 3192

www.wgu.com.au
info@wgu.com.au

