



**NEVA  
CHAIR**

---

**DESCRIPTION****MATERIALS**

wooden seat

<http://artisan.ba/en/materials#wood>

upholstery leather seat

<http://artisan.ba/en/materials#leather>

upholstery fabric seat

<http://artisan.ba/en/materials#lounge-fabric>

# NEVA CHAIR

COLLECTION: Neva

DESIGNERS: Regular Company

CODE:

CCNE1XXYY (WOODEN SEAT)

CCNE2XXYY (LEATHER SEAT)

CCNE3XXYY (FABRIC SEAT)

Dimensions: W52 D53 H78 cm

Seat size: 46x45 cm

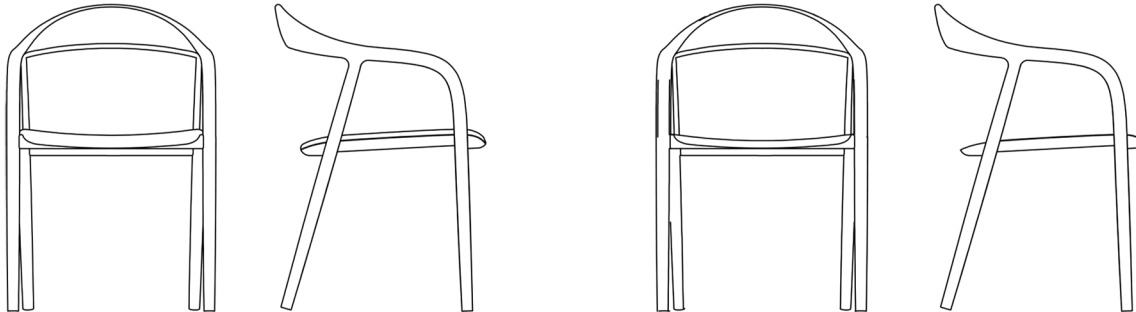
Seat high: 45 cm

Leg diameter: Ø3,3 cm

Dismantling option: No

Packing: stretch wrap + five layer cardboard box

Packing: 1 piece/packing

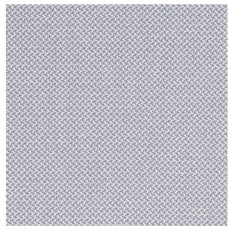




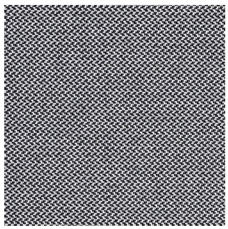
# **Materials & Finishes**

---

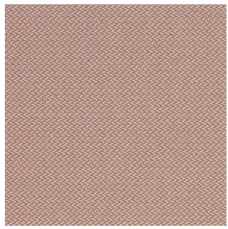
Revive 1



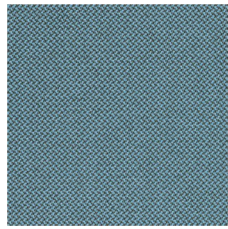
0144



0154

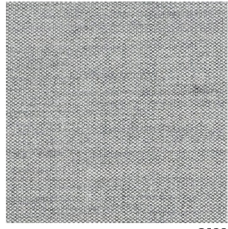


0434

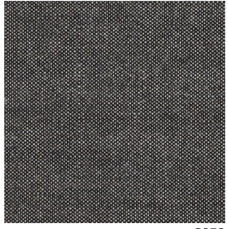


0834

Remix 2



0123



0152

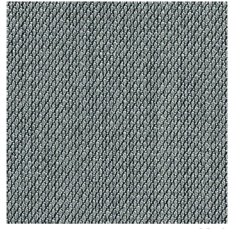


0612



0113

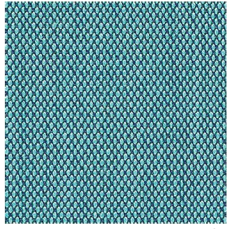
Steelcut Trio 3



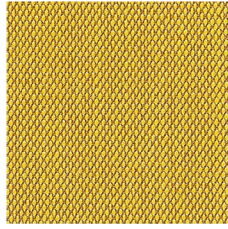
0153



0383

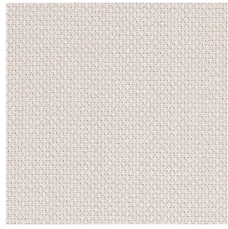


0983



0453

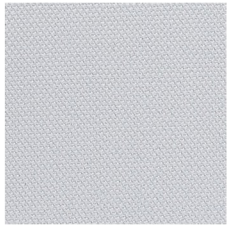
Steelcut 2



0226



0605



0120

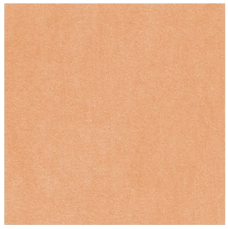


0780

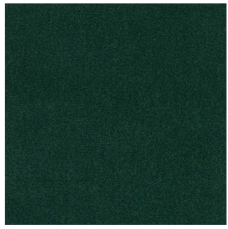
Harald 3



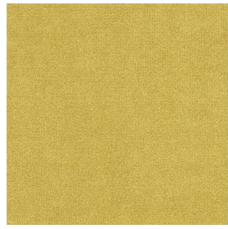
0212



0533



0952



0443

# Kvadrat Upholstery







# Leather Upholstery

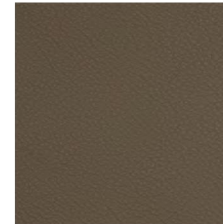
Gruppo Mastrotto Zenith



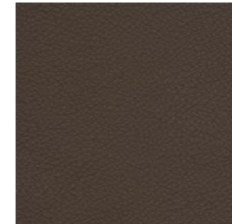
9001



9007



9034



9014

Stolz Select



310



318

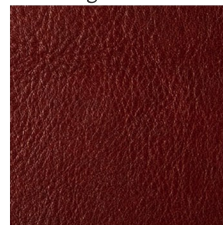


231

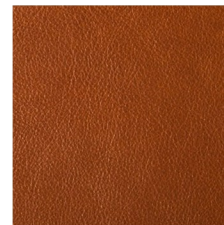


301

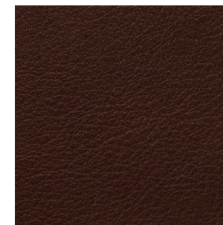
Stolz Vegetal



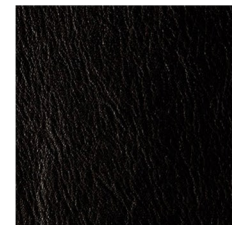
93



91



96



98

European Oak



Loba White Oil



White Pigmented Oil



Natural Oil



Wenge Oil

European Walnut



White Pigmented Oil

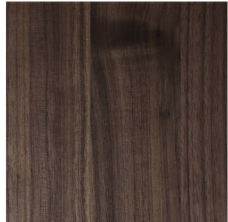


Natural Oil



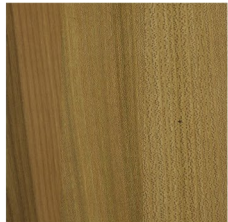
With Knots - Natural Oil

American Walnut



Natural Oil

Elm



Natural Oil

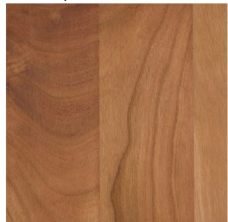


White Pigmented Oil



Jahorina Pigment

Cherry



Natural Oil

Maple



White Pigmented Oil

# Timber Species



## CONTACT

For our full range of materials and finishes, please visit our showroom or contact us on 1800 181 558.

WGU Design  
5/34 Christensen St,  
Cheltenham VIC 3192

[www.wgu.com.au](http://www.wgu.com.au)  
[info@wgu.com.au](mailto:info@wgu.com.au)

