



**LATUS  
BENCH**

---

**DIMENSIONS (CM) WXD<sub>X</sub>H  
AND DESCRIPTION**

**MATERIALS**

160 × 40 × 45 wooden seat

<http://artisan.ba/en/materials#wood>

180 × 40 × 45 wooden seat

<http://artisan.ba/en/materials#wood>

200 × 40 × 45 wooden seat

<http://artisan.ba/en/materials#wood>

220 × 40 × 45 wooden seat

<http://artisan.ba/en/materials#wood>

# LATUS BENCH

COLLECTION: Latus

DESIGNER: Salih Teskeredžić

CODE: BELAXXY

Top thickness: 4 cm

Visually: 6 cm

Leg diameter: bottom Ø3 – top Ø6 cm

Dismantling option: No

Other dimensions possible on request.

Packing: stretch wrap + five layer cardboard box

Packing: 1 piece/packing





# **Materials & Finishes**

---

European Oak



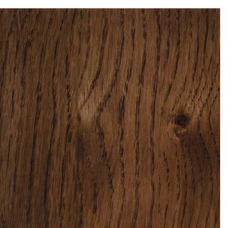
Loba White Oil



White Pigmented Oil



Natural Oil

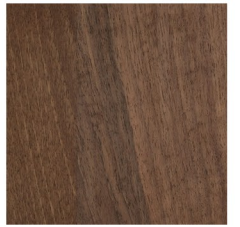


Wenge Oil

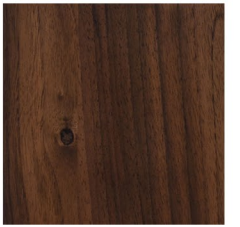
European Walnut



White Pigmented Oil

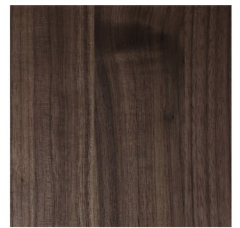


Natural Oil



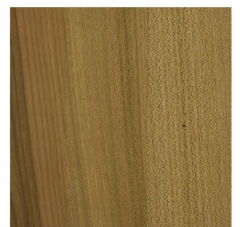
With Knots - Natural Oil

American Walnut

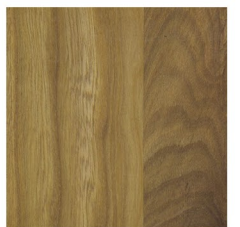


Natural Oil

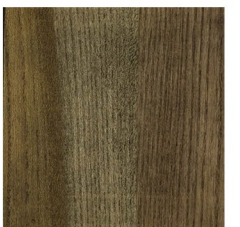
Elm



Natural Oil



White Pigmented Oil



Jahorina Pigment

Cherry



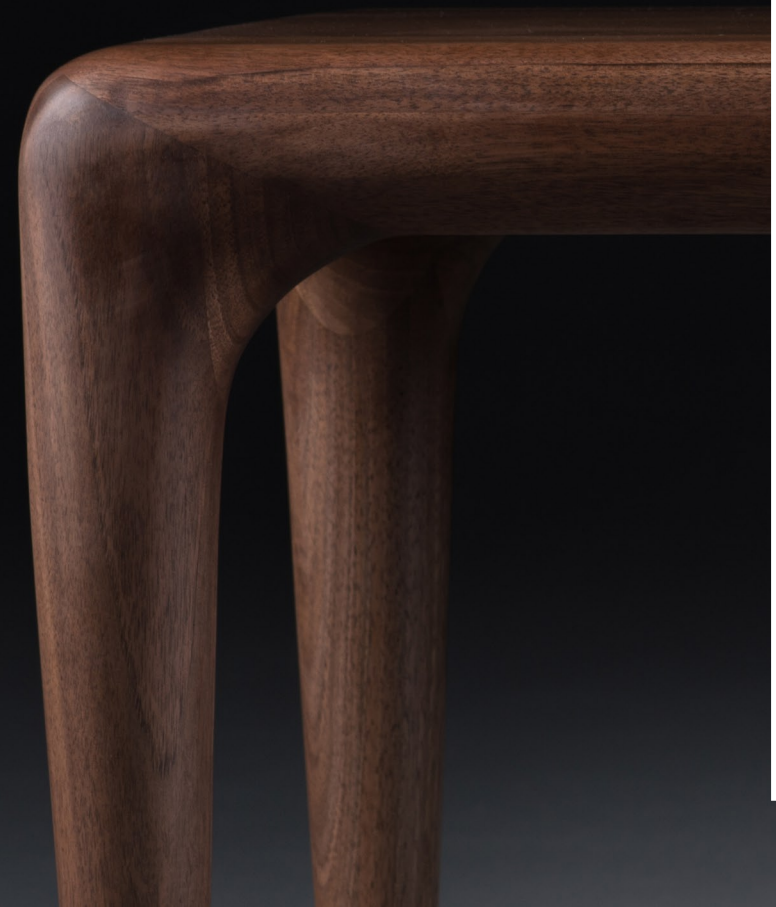
Natural Oil

Maple



White Pigmented Oil

# Timber Species



## CONTACT

For our full range of materials and finishes, please visit our showroom or contact us on 1800 181 558.

WGU Design  
5/34 Christensen St,  
Cheltenham VIC 3192

[www.wgu.com.au](http://www.wgu.com.au)  
[info@wgu.com.au](mailto:info@wgu.com.au)