

**LOUNGE TWO SEATER** **MELA**

---

**DESCRIPTION****MATERIALS**

fabric range 1

<http://www.artisan.ba/en/products/materials/fabric>

fabric range 2

<http://www.artisan.ba/en/products/materials/fabric>

Fabric **range 1** - Kvadrat Remix 2 and Revive 1, **range 2** - Kvadrat Steel cut trio 3 and Harald 3

# MELA LOUNGE TWO SEATER

COLLECTION: Mela

DESIGNERS: Regular Company

CODE:

LSME1R1XXYY (FABRIC)

LSME1R2XXYY (FABRIC)

Dimensions: W178 D83 H79 cm

Seat size: 174x74 cm

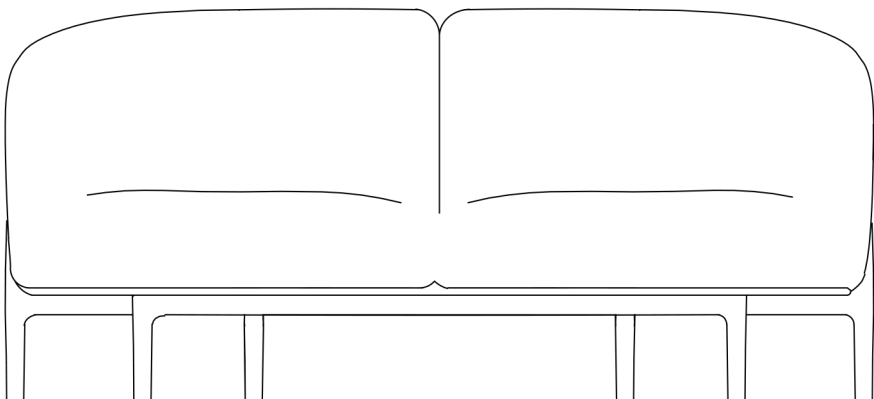
Seat high: 43 cm

Leg diameter: bottom 3,5 - top 4 cm

Dismantling option: No

Packing: stretch wrap + five layer cardboard box

Packing: 1 piece/packing

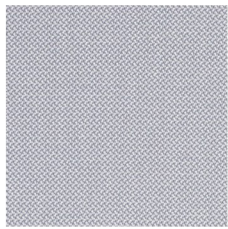




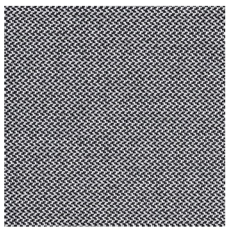
# **Materials & Finishes**

---

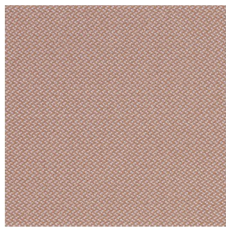
Revive 1



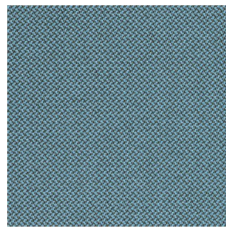
0144



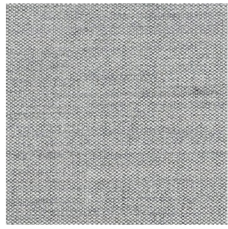
0154



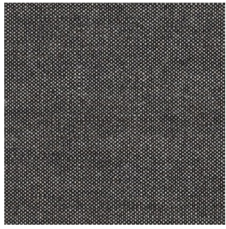
0434



0834



0123



0152

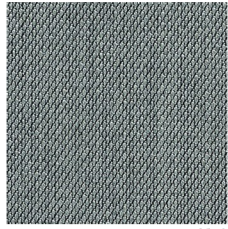


0612



0113

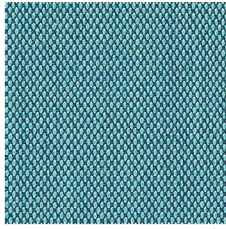
Steelcut Trio 3



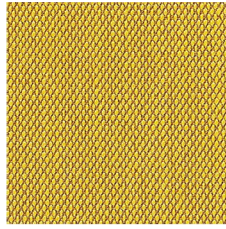
0153



0383

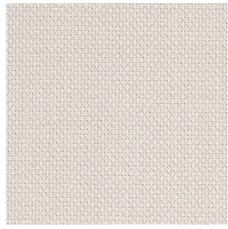


0983



0453

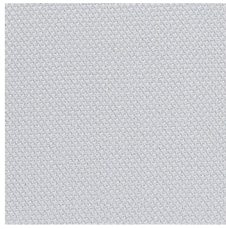
Steelcut 2



0226



0605



0120

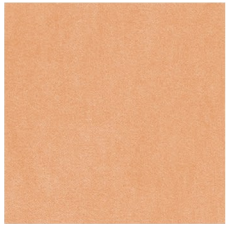


0780

Harald 3



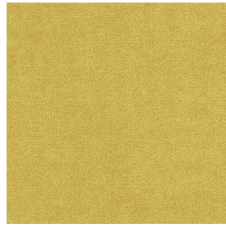
0212



0533



0952



0443

# kvadrat Upholstery





## European Oak



Loba White Oil



White Pigmented Oil



Natural Oil



Wenge Oil

## European Walnut



White Pigmented Oil



Natural Oil



With Knots - Natural Oil

## American Walnut



Natural Oil

## Elm



Natural Oil

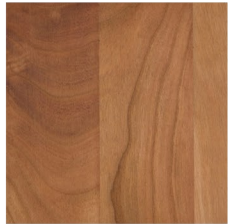


White Pigmented Oil



Jahorina Pigment

## Cherry



Natural Oil

## Maple



White Pigmented Oil

# Timber Species



## CONTACT

For our full range of materials and finishes, please visit our showroom or contact us on 1800 181 558.

WGU Design  
5/34 Christensen St,  
Cheltenham VIC 3192

[www.wgu.com.au](http://www.wgu.com.au)  
[info@wgu.com.au](mailto:info@wgu.com.au)

